



DIAGNOSTICS

The Spirometry Source

INSTALLATION MANUAL FOR BLUETOOTH ADAPTER

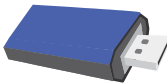


INSTALLATION GUIDE

BLUETOOTH ADAPTER INSTALLATION GUIDE

29-5428

Rev. 11.30.12



STEP BY STEP DIRECTIONS
FOR INSTALLING
THE BLUETOOTH ADAPTER

TABLE OF CONTENTS:

CONCEPTRONIC® BLUETOOTH ADAPTER 04

D-LINK® BLUETOOTH ADAPTER..... 08

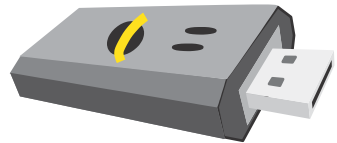
INVES® BLUETOOTH ADAPTER 12

LINKSYS® BLUETOOTH ADAPTER 16

SMC® BLUETOOTH ADAPTER 19

Revised
Date: 11/2012

Approved
Date: 11/2012

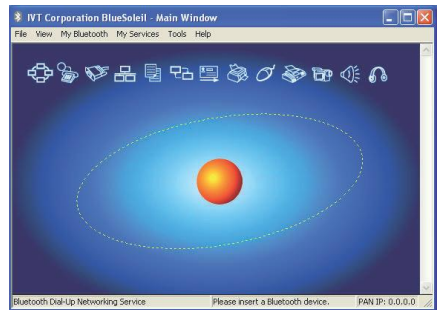


CONCEPTRONIC BLUETOOTH

IMPORTANT: Install the CD-ROM Software before connecting the adapter to the USB port.

To install the Bluetooth software, follow the step-by-step instructions provided by the manufacturer.

1. Once the software is installed, restart the PC and start the BlueSoleil application.
2. Connect the Bluetooth adapter to a USB port on your computer.



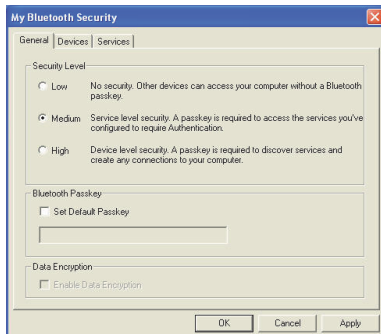
3. The welcome screen will appear, which allows you to configure the name of the device that will be used by the Bluetooth device to identify itself to other devices. Also select the type of device for your PC.

4. Click on **My Bluetooth / Device Properties**.

The following screen will appear:



Click on the accessibility tab and select:
Connection property: Connectable.
Discovery mode: General distinguishable.
Bonding mode (Pairing mode):
Accept bond.



5. Configure security. To do so, click on **My Bluetooth/Security**.

Select the medium level of security and click on **"Apply."**

6. Click on **My Bluetooth/Search for Bluetooth device** and the device that you want to connect to should appear on the screen. Right click the mouse on the corresponding device and then left click the mouse on **Update services**.



7. A screen will appear requesting the Bluetooth PIN.
You must use the last 3-digits of the serial number of the device as the PIN:

Examples:

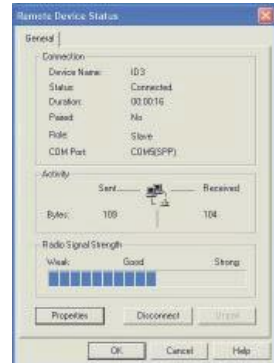
11A - D**230** a PIN: 230 ; 11A - **120** a PIN: 120
11B - A**120** a PIN: 120 ; 11B - **020** a PIN: 020

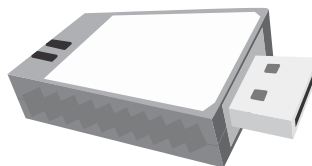
8. Right click on the device again and select **Connect – Bluetooth series port service**.



9. A message will give you information on the COM port which the Bluetooth device will use to select it in the program, although you can also consult this information in the connection status (by right clicking on the device that you are connected to and selecting Status).

10. To disconnect the device, right click the mouse on the device and select Disconnect _ Bluetooth series port service. Once disconnected, you may remove the Bluetooth adapter from the PC.





D-LINK BLUETOOTH

IMPORTANT: Install the CD-ROM Software before connecting the adapter to the USB port.

To install the Bluetooth software, follow the step-by-step instructions provided by the manufacturer.

Once the software is installed and the adapter is connected, right click on the **Bluetooth icon** which will appear on the bottom, right-side of the screen.



Left click on "Start using Bluetooth" and the following screen will appear:



Click on Next and configure the name and type of equipment.

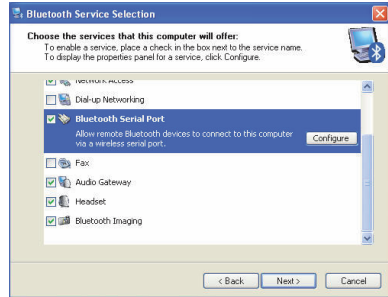


Once the name and type of equipment are configured, click on **Next**.

Click on **Next** to select the services that you want to install.




In order for the device installed in the computer to communicate with the spirometer, you must select the **Bluetooth Series Port** service. Other services may be needed to communicate with other devices that have Bluetooth (mobile phones, another computer, ...)



Click on **Next** to install the services.



The following screen will then appear. Click on **Omit**.

Double click the bluetooth icon  of bottom right-hand side of the screen. Then a screen will appear requesting the Bluetooth PIN.

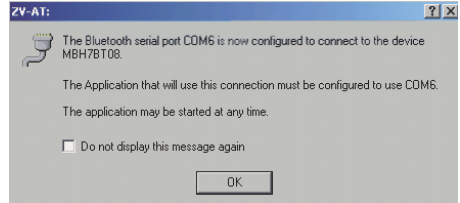
You must use the last 3-digits of the serial number of the device as the PIN:

Examples:

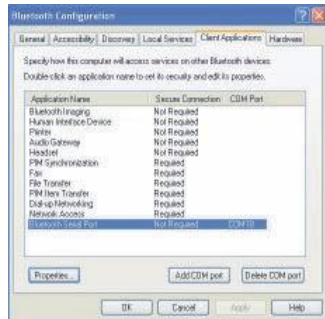
11A - D**230** a PIN: 230 ; 11A - **120** a PIN: 120
11B - A**120** a PIN: 120 ; 11B - **020** a PIN: 020

Search for Device or select the required device if it appears at this time.

Once the connection is established between your PC and the device indicated, a message will appear on the PC displaying the COM used, which is the one to be used in the application.



To consult the COM port, at any time, right click the mouse on the Bluetooth icon and select Advanced configuration.



INVES BLUETOOTH

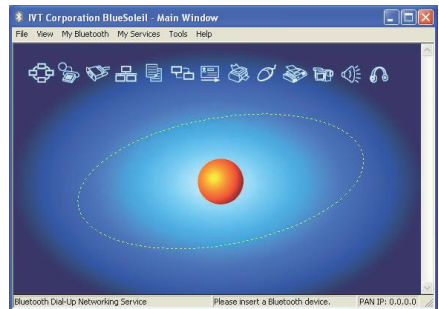


IMPORTANT: Install the CD-ROM Software before connecting the adapter to the USB port.

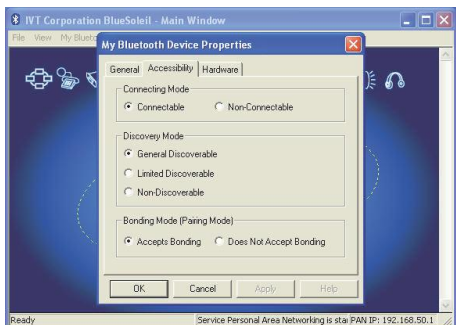
To install the Bluetooth software, follow the step-by-step instructions provided by the manufacturer.

1. Once the software is installed, restart the PC and start the BlueSoleil application.

2. Connect the Bluetooth adapter to a USB port on your computer.



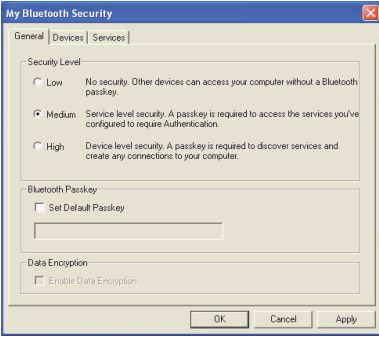
3. The welcome screen will appear, which allows you to configure the name of the device that will be used by the Bluetooth device to identify itself to other devices. Also select the type of device for your PC.



4. Click on **My Bluetooth / Device Properties**.

The following screen will appear:

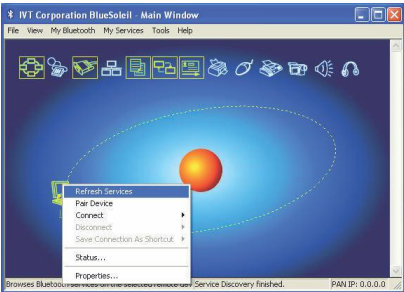
Click on the accessibility tab and select:
Connection property: **Connectable**.
Discovery mode: **General distinguishable**.
Bonding mode (Pairing mode):
Accept bond.



5. Configure security. To do so, click on **My Bluetooth/Security**.

Select the medium level of security Click on "**Apply**."

6. Click on **My Bluetooth/Search for Bluetooth device** and the device that you want to connect to should appear on the screen. Right click the mouse on the corresponding device and then left click the mouse on **Update services**.

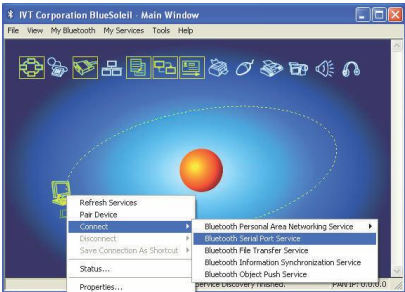


7. A screen will appear requesting the Bluetooth PIN. You must use the last 3-digits of the serial number of the device as the PIN:

Examples:

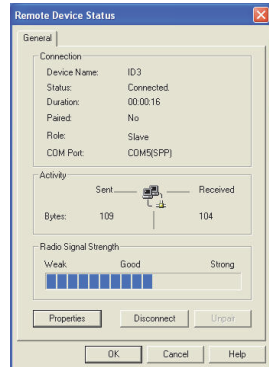
11A - D**230** a PIN: 230 ; 11A - **120** a PIN: 120
11B - A**120** a PIN: 120 ; 11B - **020** a PIN: 020

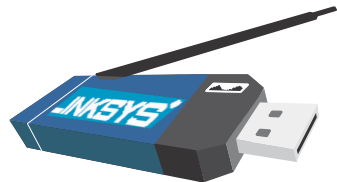
8. Right click on the device again and select **Connect – Bluetooth series port service**.



9. A message will give you information on the COM port which the Bluetooth device will use to select it in the programme, although you can also consult this information in the connection status (by right clicking on the device that you are connected to and selecting Status).

10. To disconnect the device, right click the mouse on the device and select Disconnect _ Bluetooth series port service. Once disconnected, you may remove the Bluetooth adapter from the PC.





LINKSYS BLUETOOTH

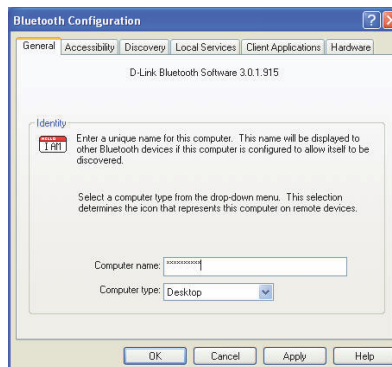
IMPORTANT: Install the CD-ROM Software before connecting the adapter to the USB port.

To install the Bluetooth software, follow the step-by-step instructions provided by the manufacturer.



1. Once the software is installed, restart the PC. The Bluetooth icon will appear on the bottom right-hand side of the screen.
2. Right click on this icon and select **Advanced Configuration**.

Introduce the name of the equipment in **Computer name** and select the type of PC in **Computer type**.



3. Right click on the Bluetooth icon and select Quick Connect _ Bluetooth Serial Port.

A screen will appear requesting the Bluetooth PIN.

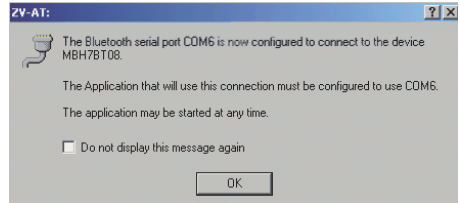
You must use the last 3-digits of the serial number of the device as the PIN:

Examples:

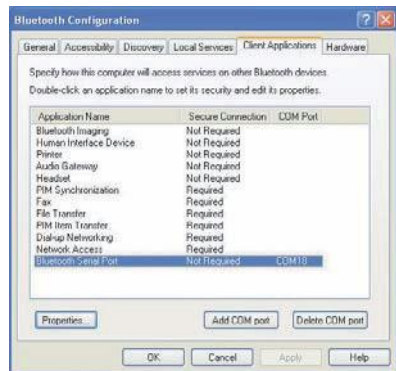
11A - D230 a PIN: 230 ; 11A - 120 a PIN: 120
11B - A120 a PIN: 120 ; 11B - 020 a PIN: 020

4. Search for Device or select the required device if it appears at this time.

5. Once the connection is established between your PC and the device indicated, a message will appear on the PC displaying the COM used, which is the one to be used in the application.



6. To consult the Bluetooth Serial Port, at any time, you may Click on Bluetooth configuration and Client Applications





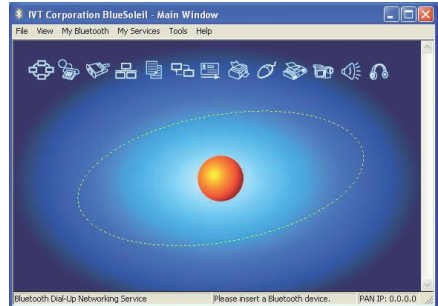
SMC BLUETOOTH

IMPORTANT: Install the CD-ROM Software before connecting the adapter to the USB port.

To install the Bluetooth software, follow the step-by-step instructions provided by the manufacturer.

1. Once the software is installed, restart the PC and start the BlueSoleil application.

2. Connect the Bluetooth adapter to a USB port on your computer.



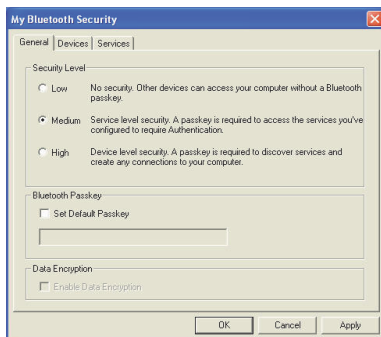
3. The welcome screen will appear, which allows you to configure the name of the device that will be used by the Bluetooth device to identify itself to other devices. Also select the type of device for your PC.



4. Click on **My Bluetooth / Device Properties**. The following screen will appear:

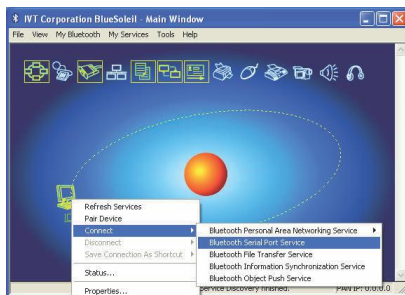
Click on the accessibility tab and select: Connection property: **Connectable**. Discovery mode: **General distinguishable**. Bonding mode (Pairing mode): **Accept bond**.

5. Configure security. To do so, click on **My Bluetooth/Security**.



Select the medium level of security and Click on "Apply."

6. Click on **My Bluetooth/Search for Bluetooth device** and the device that you want to connect to should appear on the screen. Right click the mouse on the corresponding device and then left click the mouse on **Update services**.



7. A screen will appear requesting the Bluetooth PIN. You must use the last 3-digits of the serial number of the device as the PIN:

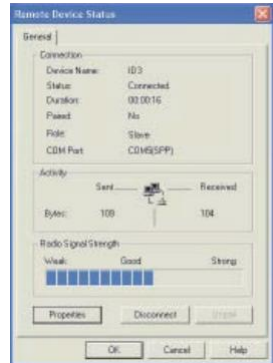
Examples:

11A - D**230** a PIN: 230 ; 11A - **120** a PIN: 120
 11B - A**120** a PIN: 120 ; 11B - **020** a PIN: 020

8. Right click on the device again and select Connect – Bluetooth series port service.



9. A message will give you information on the COM port which the Bluetooth device will use to select it in the program, although you can also consult this information in the connection status (by right clicking on the device that you are connected to and selecting Status).



10. To disconnect the device, right click the mouse on the device and select Disconnect _ Bluetooth series port service. Once disconnected, you may remove the Bluetooth adapter from the PC.

